

# World Alarm Clock

*(Version 3.0.1 -- Revised May 2, 2012)*

## Introduction

**WorldAlarmClock.exe** is a simple utility which displays the time in up to 5 different time zones around the world. Two of the time zones are your local time and Coordinated Universal Time (a.k.a. – Greenwich Mean Time). The remaining 3 times can be set to any time zone in the world.

The program also allows you to set up to 5 different alarms. Each alarm can be tied to any of the selected time zones.

Also included is an optional countdown timer which can be set for any time duration up to 23 hours, 59 minutes, and 59 seconds.

## Installation

Run the installation package file, **WorldAlarmClock.msi**. This will install **WorldAlarmClock.exe** and all required supporting files on your computer. The installer will suggest a default location for the program file. You may change the location or leave it at the default, it does not matter. However, the **WorldAlarmClock.rtf** file MUST be located in the same directory as the **WorldAlarmClock.exe** file.

## Program Operation

On startup, **WorldAlarmClock.exe** displays a window similar to the one shown in Figure 1.



Figure 1

If the countdown timer is enabled, the window shown in Figure 2 is displayed.



Figure 2

Pressing on **Start** will start the countdown timer and enable **Reset** button. An optional warning time can be specified. When the timer reaches the warning time, the display will change to black characters on a yellow background. This is useful for alerting the user that the timeout time is approaching. After the timer counts down to 00:00:00, an alarm will sound and the **Silence** button will be enabled. Also, the color of the timer display will change to yellow characters on a red background. If a custom timeout message, that message will be displayed instead of the time. Examples are shown in Figures 3 & 4.



Figure 3



Figure 4

### Program Setup

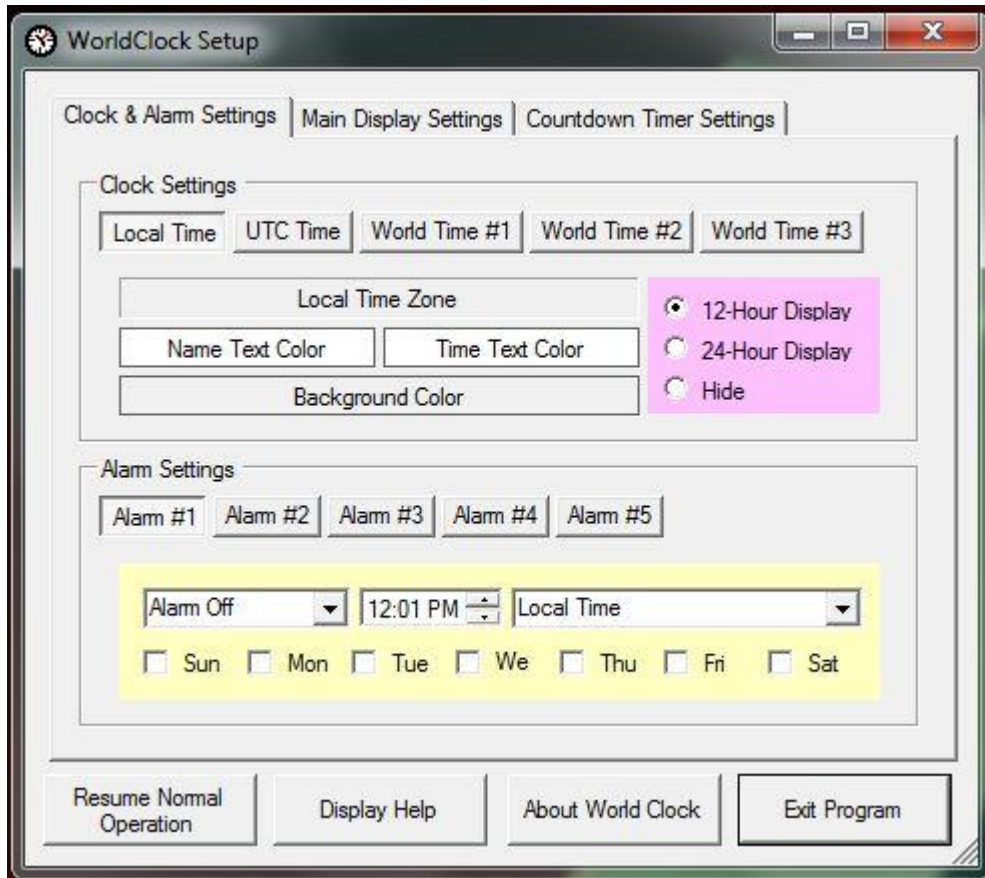
Right-click anywhere on the **WorldAlarmClock** window to display the program setup form. This form has 3 pages which are selected by clicking on the desired tab at the top of the form.

At the bottom of each page are 4 buttons labeled “Resume Normal Operation”, “Display Help”, “About World Clock”, and “Exit Program”. Clicking on **Resume Normal Operation** will close the setup window and allow normal program operation to continue. Clicking on **Display Help** will display this document. Clicking on **About World Clock** will display a small window with basic program information such as version number copyright date, etc. Clicking on **Exit Program** will close the program.

If you have changed any settings, you will be asked if you want to save the new settings when you click on either **Resume Normal Operation** or on **Exit Program**.

### Clock & Alarm Settings

The 1<sup>st</sup> page allows you to setup the clocks and the alarms and is shown in Figure 5



**Figure 5**

The controls in the box labeled “Clock Settings” allow you to set up each of the 5 clocks.

First, click on the button for the clock you wish to set up. If you select “World Time #1”, “World Time #2”, or “World Time #3”, you will need to select the time zone for the clock. To select the time zone, click on the dropdown list box directly below the clock selection buttons and then click on the desired time zone.

The “Local Time” clock is fixed to the time zone set in your PC. The “UTC Time” clock is fixed to Universal Coordinated Time, also known as Greenwich Mean Time.

You can change the character color of the time zone name and of the time by clicking on the boxes containing the text “Name Text Color” and “Time Text Color” respectively. You can change the background color of the clock by clicking on the box containing the text “Background Color”. Clicking on any of these 3 boxes will display a small window where you can select the desired color.

Finally, you need to select the time display format by selecting on either “12-Hour Display” or “24-Hour Display”. Clicking on “Hide” will cause that clock to not be displayed.

The controls in the box labeled “Alarm Settings” allow you to set up each of the 5 alarms.

First, click on the button for the alarm you wish to set up.

The 1<sup>st</sup> dropdown list box allows you to set the alarm type. You can select between 2 different types of alarms: “Single Alarm” and “Repeating Alarm”. A single alarm sounds only once and then turns itself off. A repeating alarm will sound every day that is selected and will repeat again the following week and every week thereafter. You can also use this list to turn an alarm off.

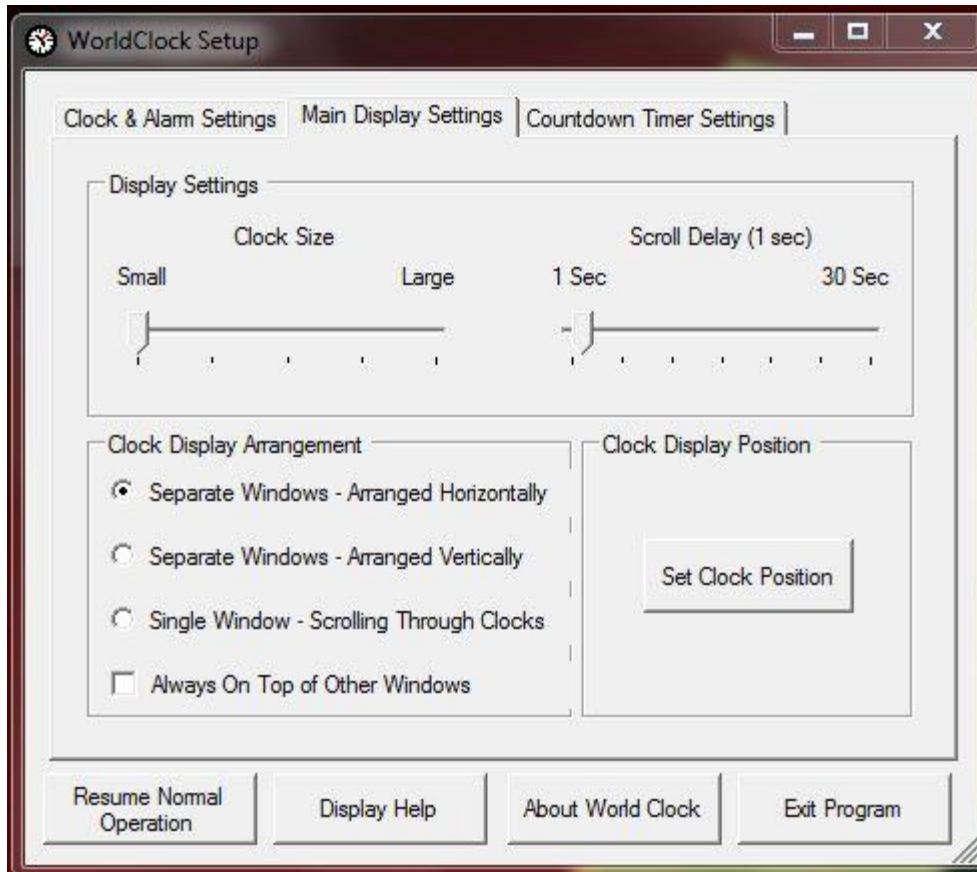
The next control allows you to set the time of day that the alarm will sound.

The last dropdown list box allows you to associate the alarm with any of the clocks that are displayed. The alarm will sound when the time reaches the selected time in the time zone of the associated clock.

Finally, check the boxes for each day you want the alarm to sound. If you have selected a single alarm, you may select more than one day. However, when the time reaches the alarm time on a day that was selected, the alarm will sound and will turn itself off, and the alarm will not sound on any remaining days that were checked.

### **Main Display Settings**

The 2<sup>nd</sup> page allows you to select how the clocks are displayed on the screen and is shown in Figure 6.



**Figure 6**

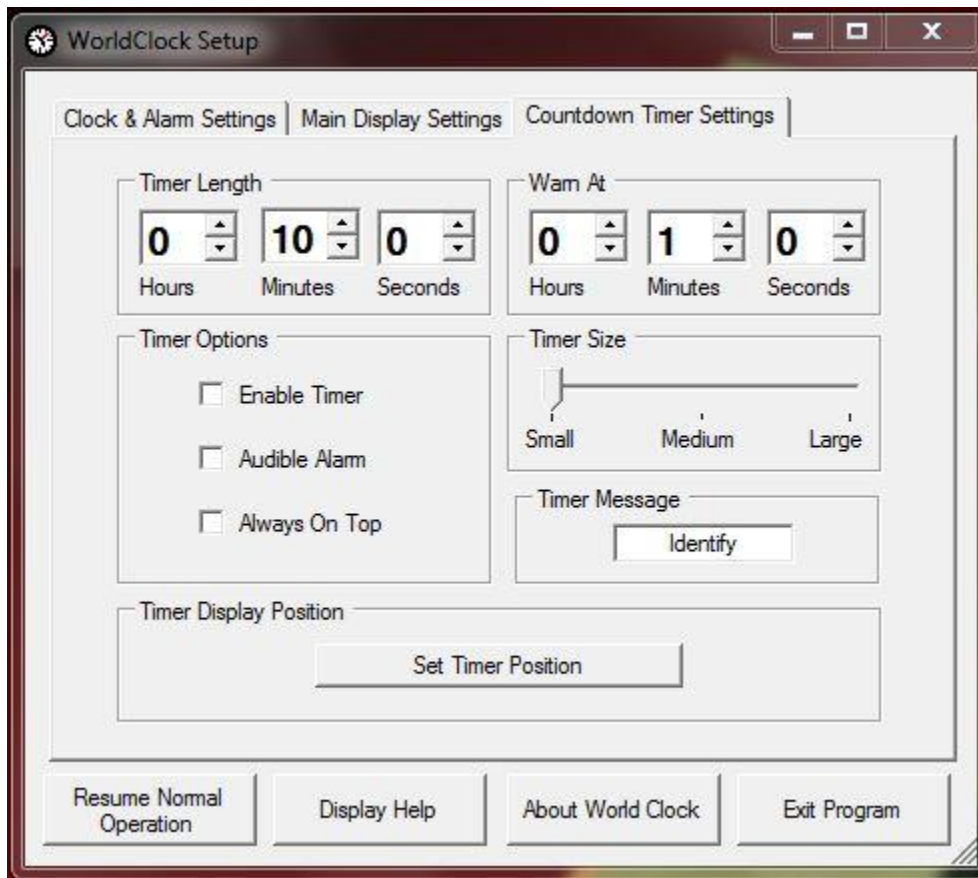
The box labeled “Display Settings” contains 2 controls which allow you to select the size of the clocks and to select the scroll speed if you have the single window display selected.

The box labeled “Clock Display Arrangement” allows you to select how the clocks are arranged on the screen. You can select to have the clocks displayed in a row (horizontally), in a column (vertically), or in a single window which displays each of the clocks in turn. If you select a clock size to large to allow all of the clocks to fit on the screen horizontally or vertically, the program will automatically switch to the single-window scrolling display. In addition, if you check the box labeled “Always On Top of Other Windows”, the clock display will always be visible on top of any other programs you may have running.

The button in the box labeled “Clock Display Position” allows you to select the position on the screen of the clock display. When you click on “Set Clock Position”, a window opens that represents the size & position of the clock display on the screen. Drag the window to the desired position & close it.

### **Countdown Timer Settings**

The 3<sup>rd</sup> page allows you to set up the countdown timer and is shown in Figure 7.



**Figure 7**

The controls in the box labeled “Timer Length” allow you to set any timeout time from 0 hours, 0 minutes, 0 seconds through 23 hours, 59 minutes, 59 seconds.

The controls in the box labeled “Warn At” allow you to set the time remaining at which the timer display will switch to a yellow background. To disable this feature, set the controls to 0 hours, 0 minutes, and 0 seconds.

The box labeled “Timer Options” contains 3 check boxes which allow you to enable or disable 3 options for the countdown timer. If the **Enable Timer** check box is not checked, the countdown timer is disabled and the timer will not be displayed. If the **Audible Alarm** check box is checked, the countdown timer will play an alarm sound when the timer reaches 00:00:00. If the **Always on Top** check box is displayed, the countdown timer window will always be visible on top of any other programs you may have running.

The slider in the box labeled “Timer Size” allows you to set the size of the timer display on the screen.

The text box in the box labeled "Timer Message" allows you to specify a word to be displayed in the countdown timer display when the timer reaches 00:00:00. To display properly, the word should not be more than 6 or 7 characters long.

The button in the box labeled "Timer Display Position" allows you to select the position on the screen of the clock display. When you click on "Set Timer Position", a window opens that represents the size & position of the timer display on the screen. Drag the window to the desired position & close it.

### **License and Warranty Information**

This software may be freely copied by any private individual for their own personal use. Other than the cost of the distribution media, no fee may be charged for the distribution of this software to any other party or parties.

No commercial use of the software may be made by any party without the express written consent of:

RNA Consulting Services, LLC  
Post Office Box 82  
West Terre Haute, IN 47885-0082.

The source code and programming techniques used in the development of this software program are proprietary to RNA Consulting Services, LLC. The software may not be reverse engineered or de-compiled for any purpose.

No warranty, expressed or implied, is conveyed for the use of the software or for the installation of the software on any computer.

### **About the Author**

**WorldAlarmClock.exe** was written by Ray Andrews, K9DUR.

Ray holds an Amateur Extra class license and was first licensed in April 1960. He currently resides in West Terre Haute, IN, and is a retired electronic design engineer and software developer. He operates a small custom software consulting business just to keep him out of mischief between camping trips.

For more information, visit Ray's web pages:

<http://k9dur.info>

<http://rnaconsultingservices.com>

-----

## Revision History

V3.0.1 – May 2, 2012 – Fixed bug in display of time zone names for the 3 user-selectable time zones.

V3.0.0 – May 1, 2012 – Complete re-write. Added drag & place positioning for clock & timer. Moved location of setup data from the registry to the %APPDATA% folder.

v2.0.1 – Apr 25, 2010 – Fixed bug preventing additional time zone clocks from being displayed.

v2.0.0 – Jul 17, 2009 – Complete re-write. Added countdown timer. Added help screen & documentation.

-----  
*Copyright 2012 by RNA Consulting Services, LLC*